



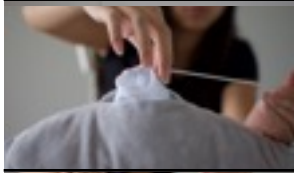
Step 1: Gently pull out pieces of fluff and pull it apart to expand it.



Step 2: Locate the white pouch on the back of your animal and pull it out and open it. Do not touch the zip tie. Insert your special wish!



Step 3: Insert bits of fluff starting with the arms and legs. Next, fill with fluff until the belly is full and it is to your liking.



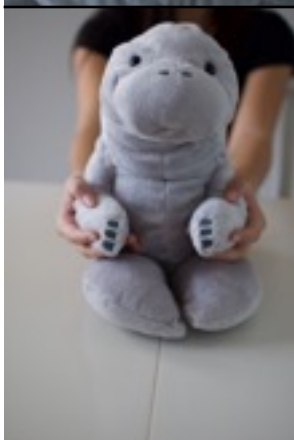
Step 4: Pull the zip tie closed as shown. Once it is closed you cannot open it again.



Step 5: Cut off the excess zip tie. For small children consider using nail clippers for safety.



Step 6: Locate the velcro and pull off the strip of fabric and close.



Step 7: Enjoy your new friend!!

Stuffing Instructions

